

# TestPack® hCG Combo (505805)

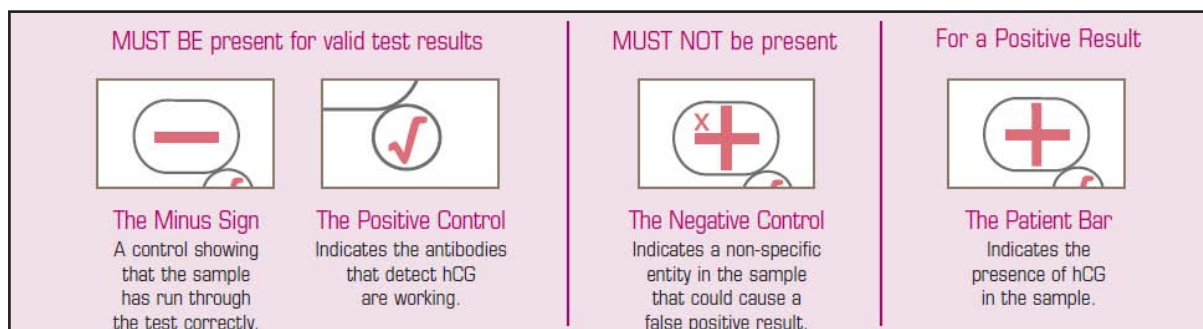
## How to Use Guide

The Testpack® hCG Combo detection test is a rapid diagnostic device for the qualitative detection of human chorionic genadotrophin (hCG) in urine and serum. The kit has many on board controls allowing complete confidence in the results. Below is a synopsis of how to use the kit. Please observe the usual health and safety guidelines and ensure that the test is suitable for use. Please refer to the instructions for us for full information as this is merely a guide.

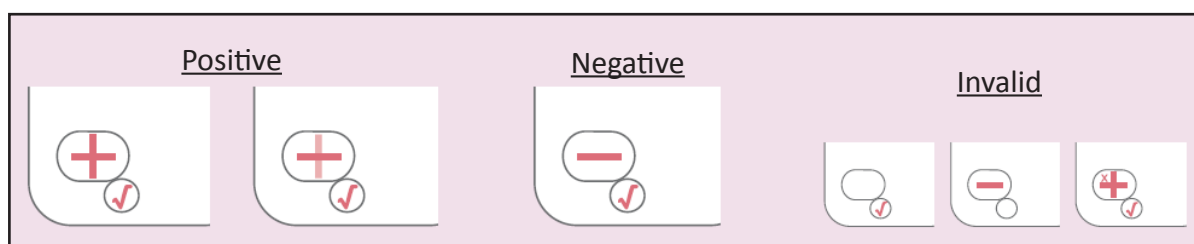


### On board controls

The Testpack hCG combo cassette has several on board controls. Below shows how the windows appear in different scenarios.



### Results



Please see instructions for use for full information.

If you have any further questions please contact us via the enquiry button on the product page.

For reference hCG positive and negative controls are available (510068). Please evaluate these in-house.