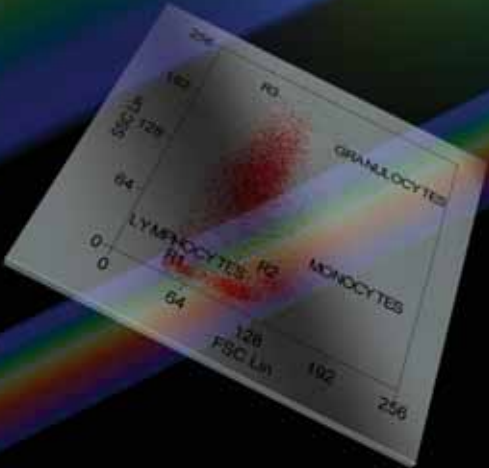
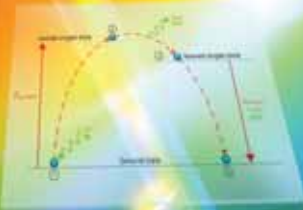


# Introduction to Flow Cytometry

- Principles
- Data analysis
- Protocols
- Troubleshooting



By Misha Rahman, Ph.D.

Technical advisors  
Andy Lane, Ph.D.  
Angie Swindell, M.Sc.  
Sarah Bartram, B.Sc.



**Inverness Medical has  
changed it's name to Alere**  
0161 483 5884  
ukcustomer@alere.com  
www.alere.co.uk



# Contents

## Chapter 1 Principles of the flow cytometer

Fluidics system	4
Optics and detection	5
Signal processing	6
Electrostatic cell sorting	7

## Chapter 2 Principles of fluorescence

Fluorochromes and light	9
Maximal absorbance and maximal emission	10
Why use a fluorescent probe?	12
Which fluorochromes are useful for flow cytometry?	12
Fluorescence compensation	14

## Chapter 3 Data analysis

Gates and regions	16
Single-parameter histograms	18
Two-parameter histograms	20
Intracellular antigens	21
Immunophenotyping	22

## Chapter 4 Common protocols

Sample preparation	24
<b>Methods</b>	
1 Preparation of cells	25
2 Direct immunofluorescence staining of cells and blood	26
3 Indirect immunofluorescence staining of cells and blood	27
4 Staining lambda and kappa chains in whole blood	28
5 Whole blood protocol for analysis of intracellular cytokines	28
6 Direct staining of intracellular antigens	29
7 Direct staining of intracellular antigens: methanol method	30

## Chapter 5 Troubleshooting

## Recommended reading